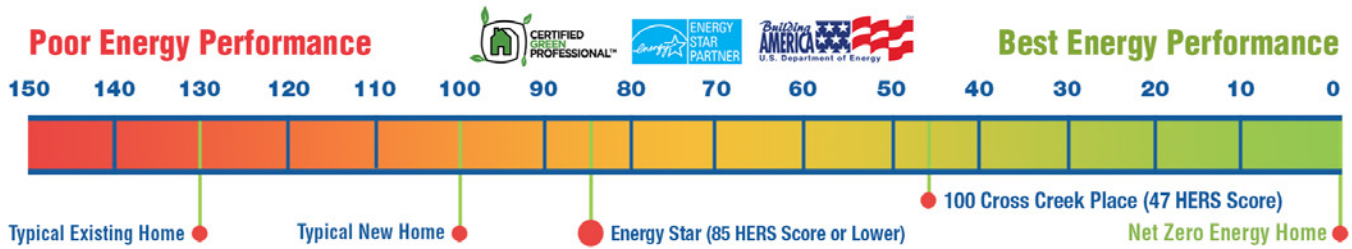




WOLF CREEK

100 Cross Creek Place, Oak Ridge, TN 37830, Lot 47

Home Energy Rating Score (HERS) 47!



As one of the most energy efficient houses in the nation, this ZEBRA home has attracted worldwide media attention and was featured on HGTV's *This New House*. Located 10 minutes from Oak Ridge National Laboratory (ORNL) and available for closing with an occupancy date of March 2013, this home uses significantly less energy than a traditionally built new home, while providing similar amenities.



new code built home and an 83% energy savings compared to a typical existing home.

This Energy Star Certified Home has 3 bedrooms plus a multipurpose room and 2.5 baths with the master on the main level.

According to the Home Energy Rating System (HERS), a new home built to energy code requirements has a rating of 100 and a net zero energy home has a rating of zero. This home offers a rating of 47, indicating a 53% energy savings compared to a

Downstairs is wide planked wood flooring throughout and baths and laundry floors are covered in tile. The spacious family room has a gas fireplace and the kitchen features quartz countertops. The large master suite has a walk-in closet, bathroom with dual vanities, whirlpool tub and tiled shower. Energy Star appliances include refrigerator, microwave/oven combo, dishwasher, range, washer and dryer. Finished space is 2,860 square feet. **Now offered at \$485,000.**

This home incorporates multiple building methods and materials that produce significant energy savings. The neighborhood is convenient and appealing. Some of the state of the art building methods and materials include:

- Insulated metal roof with a quality coating system that incorporates specially-formulated infrared reflective pigments which will keep the home cooler
- ENERGY STAR rated clothes washer, refrigerator, and dishwasher by Whirlpool®
- Alside® triple-pane, low emittance, Argon gas filled windows are ENERGY STAR rated
- Compact fluorescent light bulbs are ENERGY STAR rated
- Vertical loop geothermal heat exchanger
- High-efficiency water-to-air heat pump for space conditioning
- High-efficiency water-to-water heat pump for hot water heating
- ZIP wall panels with weather-resistive barrier that combine strength and stability of a high-performance panel with enhanced durability
- Award winning insulation phase change materials(PCM) are installed in floors and exterior walls to absorb heat during the day and release at night
- AdvanTech® flooring that is highly moisture-resistant and air-tight; it will not warp or delaminate
- LP® TechShield® radiant barrier and solar-powered attic fans are installed to keep the PCMs active on hot summer days
- Dual-ventilated Delta®-Dry membrane to provide natural ventilation to keep the PCM active on sunny days
- Programmable AirCycler™ controls the supply of fresh air for added comfort and better health

LA-4116



Contact Alec Blaine • Schaad Residential Real Estate

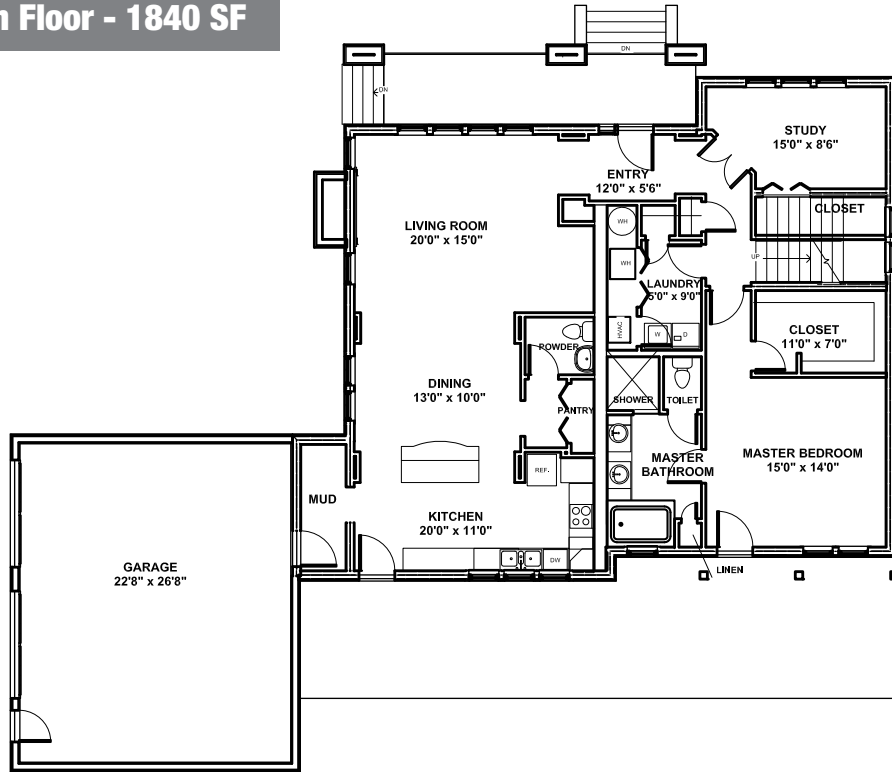
Phone 865.548.5799 ▪ Email alecblaine@gmail.com

All prices, plans, specifications, renderings, subject to change at the sole discretion of the developer. All dimensions are approximate and subject to verification by the Purchaser.

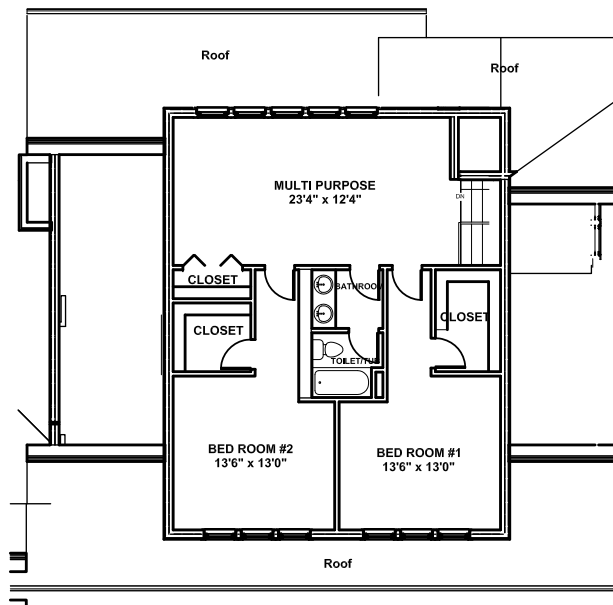


Wolf Creek - Lot 47

Main Floor - 1840 SF



Upper Floor - 1020 SF



LA-4116



All prices, plans, specifications, renderings, subject to change at the sole discretion of the developer. All dimensions are approximate and subject to verification by the Purchaser.

Contact Alec Blaine • Schaad Residential Real Estate

Phone 865.548.5799 • Email alecblaine@gmail.com

