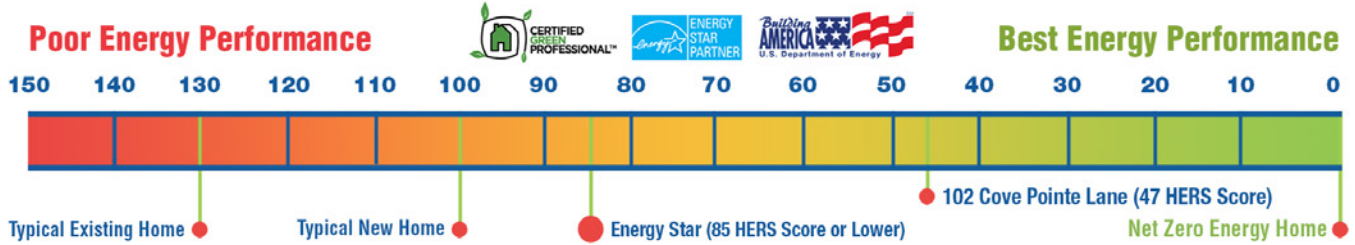




WOLF CREEK

102 Cove Pointe Lane, Oak Ridge, TN 37830, Lot 56

Home Energy Rating Score (HERS) 47!



As one of the most energy efficient houses in the nation, this ZEBRA home has attracted worldwide media attention and was featured on HGTV's *This New House*. Located 10 minutes from Oak Ridge National Laboratory (ORNL). This home uses significantly less energy than a traditionally built new home, while providing similar amenities.



This Energy Star Certified Home has 3 bedrooms plus a multipurpose room and 2.5 baths with the master on the main level.

Downstairs is wide planked wood flooring throughout and baths and laundry floors are covered in tile. The spacious family room has a gas fireplace and the kitchen features

granite countertops. The large master suite has a walk-in closet, bathroom with dual vanities, whirlpool tub and tiled shower. Stainless steel Energy Star appliances include refrigerator, microwave/oven combo, dishwasher, range, washer and dryer. Finished space is 2,550 square feet. **Now offered at \$449,900.**

According to the Home Energy Rating System (HERS), a new home built to energy code requirements has a rating of 100 and a net zero energy home has a rating of zero. This home offers a rating of 47 indicating a 53% energy savings compared to a new code built home and an 83% energy savings compared to a typical existing home.

This home incorporates multiple building methods and materials that produce significant energy savings. The neighborhood is convenient and appealing. Some of the state of the art building methods and materials include:

- Standing seam metal roof that exploits infrared-reflective paint pigments to boost solar reflectance
- ENERGY STAR rated clothes washer, refrigerator, and dishwasher by Whirlpool®
- Pella triple-pane, low emittance, Argon gas filled windows (3rd pane removable) are ENERGY STAR rated
- Compact fluorescent light bulbs are ENERGY STAR rated
- Horizontal ground loop installation that leverages foundation and utility excavations
- High-efficiency water-to-air heat pump for space conditioning
- High-efficiency water-to-water heat pump for hot water heating
- Energy Recovery Ventilator brings a supply of fresh air into a home while transferring heat and moisture between the incoming and the outgoing air
- A weather resistive barrier on the exterior walls provides moisture and air-leakage protection. The spray-on coating has no significant resistance to conductive heat flow.
- Phenolic foam insulation from Kingspan® that has an aged R-value of RUS-21
- An inclined air space that is ventilated above the phenolic foam insulation to remove moisture and unwanted heat
- Concrete foundation walls are insulated and waterproofed; basement floor is insulated with extruded polystyrene insulation

LA-4332R1



Contact Shelley Dye • Schaad Residential Real Estate

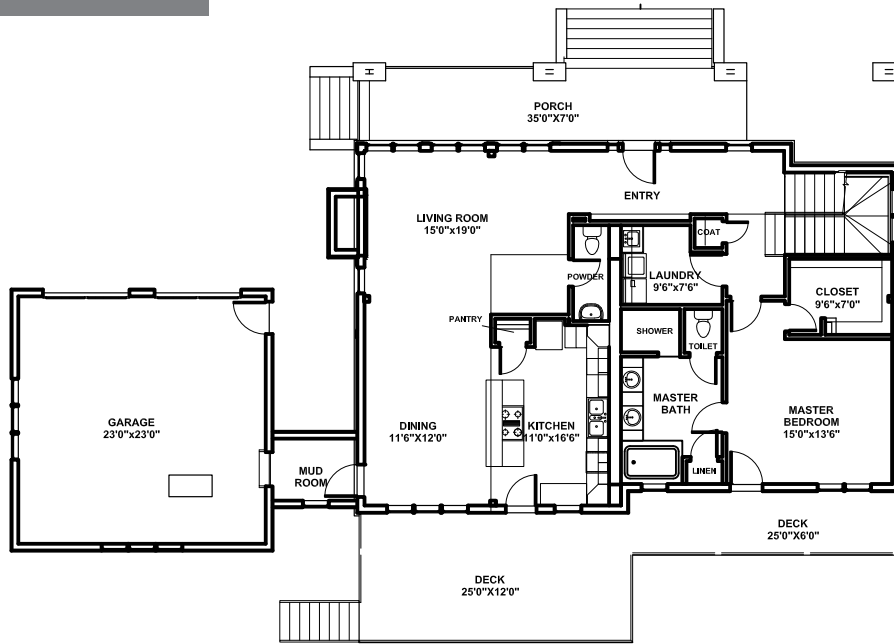
Phone 865.202.7878 • Email sdye@schaadcompanies.com

All prices, plans, specifications, renderings, subject to change at the sole discretion of the developer. All dimensions are approximate and subject to verification by the Purchaser.

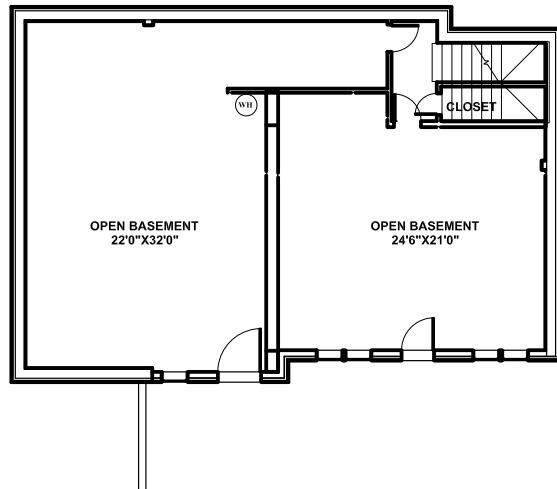


Wolf Creek - Lot 56

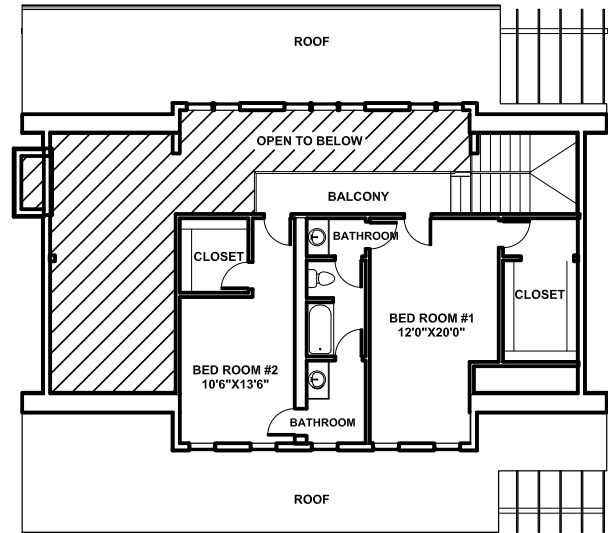
Main Floor - 1725 SF



Basement - 1692 SF



Upper Floor - 825 SF



LA-4332



All prices, plans, specifications, renderings, subject to change at the sole discretion of the developer. All dimensions are approximate and subject to verification by the Purchaser.

Contact Shelley Dye • Schaad Residential Real Estate

Phone 865.202.7878 • Email sdye@schaadcompanies.com

